



Games for Windows®
LIVE



BATMAN

ARKHAM
CITY

INSTRUCTION MANUAL

Important Health Warning About Playing Video Games

Photosensitive Seizures

A very small percentage of people may experience a seizure when exposed to certain visual images, including flashing lights or patterns that may appear in video games. Even people who have no history of seizures or epilepsy may have an undiagnosed condition that can cause these “photosensitive epileptic seizures” while watching video games.

These seizures may have a variety of symptoms, including lightheadedness, altered vision, eye or face twitching, jerking or shaking of arms or legs, disorientation, confusion, or momentary loss of awareness. Seizures may also cause loss of consciousness or convulsions that can lead to injury from falling down or striking nearby objects.

Immediately stop playing and consult a doctor if you experience any of these symptoms. Parents should watch for or ask their children about the above symptoms—children and teenagers are more likely than adults to experience these seizures. The risk of photosensitive epileptic seizures may be reduced by taking the following precautions: Sit farther from the screen; use a smaller screen; play in a well-lit room; and do not play when you are drowsy or fatigued.

If you or any of your relatives have a history of seizures or epilepsy, consult a doctor before playing.

TABLE OF CONTENTS

03.....	GAMES FOR WINDOWS–LIVE
04.....	DARK KNIGHT IN THE CITY
06.....	GETTING STARTED
07.....	CONTROLS
08.....	PLAYING THE GAME
30.....	CATWOMAN
32.....	MAIN MENU
34.....	OPTIONS
36.....	PAUSE MENU
37.....	END USER LICENSE AGREEMENT
37.....	CUSTOMER SUPPORT
37.....	LIMITED WARRANTY

GAMES FOR WINDOWS–LIVE

Play online for free! With Games for Windows–LIVE, you can build your profile, play online, chat with friends, see your friends’ games and activities, and track gaming achievements across all Games for Windows–LIVE games. Plus, you can download game content from Games for Windows–LIVE Marketplace. Get connected and join the PC gaming revolution!

CONNECTING TO LIVE

To connect to Games for Windows–LIVE, you need a high-speed Internet connection and a gamertag. If you already have a gamertag, you have what you need to connect to Games for Windows–LIVE. If you don’t have one, you can get one for free. For more information, including availability in your region, go to www.gamesforwindows.com/live.

FAMILY SETTINGS

Windows Parental Controls (Vista and Windows 7) enable parents and guardians to restrict access to mature-rated games and set time limits on how long they can play. Family settings in Games for Windows–LIVE enable parents and guardians to approve who and how your family interacts with others online with the LIVE service. For more information, go to www.gamesforwindows.com/live/familysettings.

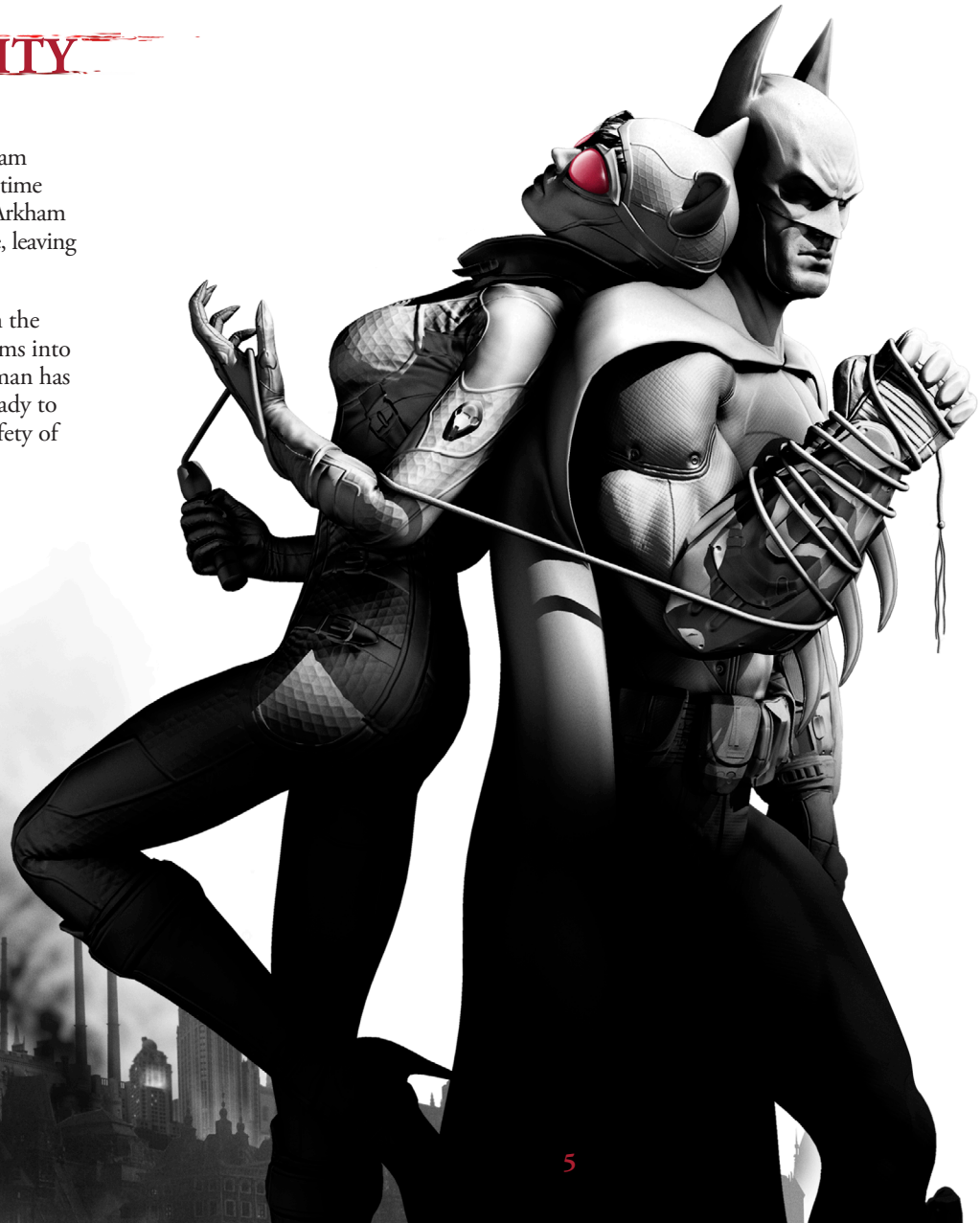
CREDITS/ONLINE MANUAL

To see a list of credits of those who brought you this game, and to view the full manual, please visit www.batmanarkhamcity.com.

DARK KNIGHT IN THE CITY

Over a year has passed since the Joker's escape and takeover of Arkham Asylum. Batman was successful in quelling the uprising, but by the time the Joker was back in custody, the damage had already been done. Arkham Asylum and Blackgate Prison were deemed to be not fit for purpose, leaving Gotham City without a place to house its criminals.

Mayor Quincy Sharp, former warden of Arkham Asylum, began the Arkham City project, converting a huge section of Gotham's slums into a gigantic prison where the inmates are allowed to run free. Batman has maintained a watchful eye on Arkham City since its opening, ready to strike should the situation get out of control and threaten the safety of Gotham's citizens.



GETTING STARTED

CONTROLS

MINIMUM SYSTEM REQUIREMENTS

OPERATING SYSTEM: Microsoft Windows XP, Vista, or 7.

CPU: Dual core CPU 2.4 Ghz

RAM: 2GB

GRAPHICS: NVIDIA 8800 series or ATI 3800 series, 512MB video memory.

SOUND: Microsoft Windows XP/Vista/7 compatible sound card (100% DirectX 9.0c compatible).

DVD-ROM: Quad-speed (4x) DVD-ROM drive.

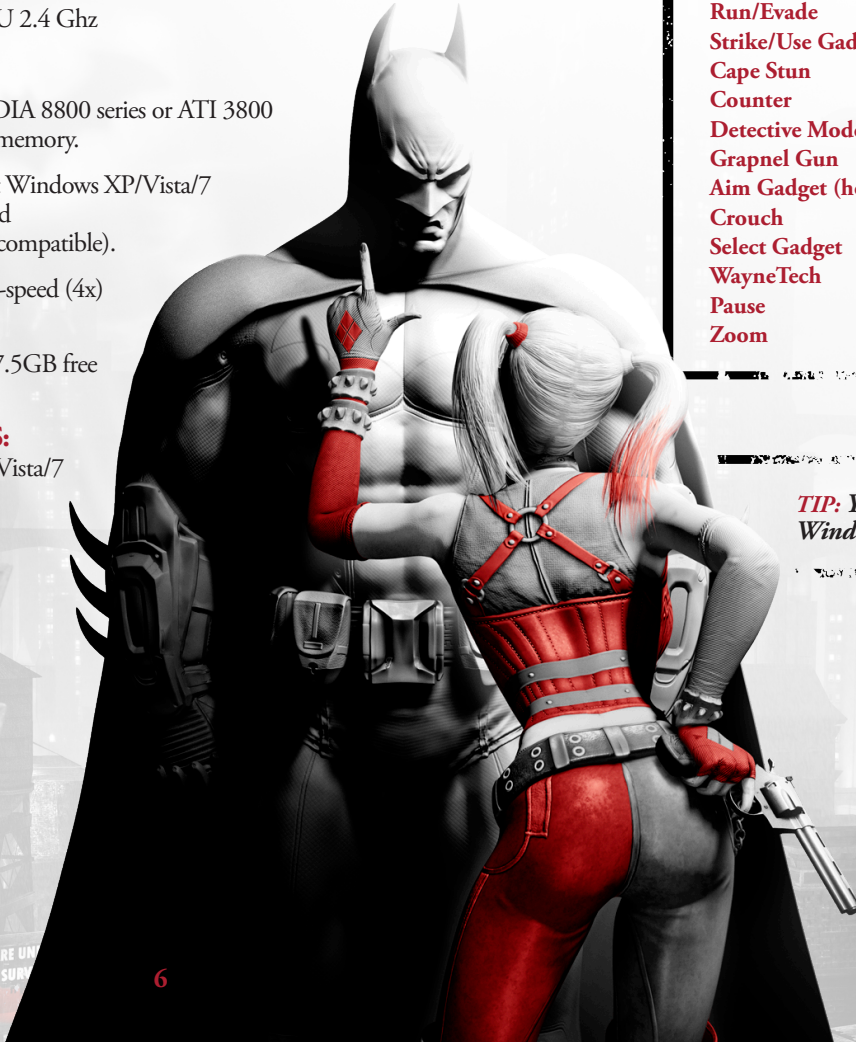
HARD DRIVE: 17.5GB free disk space.

INPUT DEVICES:

100% Windows XP/Vista/7 compatible mouse and keyboard.

Move	W/S/A/D
Look around	move mouse
Run/Evade	SPACE (hold)/SPACE+SPACE
Strike/Use Gadget	left click
Cape Stun	mouse wheel (click)/Q
Counter	right click
Detective Mode	X
Grapnel Gun	F
Aim Gadget (hold)	right click
Crouch	LCTRL
Select Gadget	mouse wheel/number keys, -, =
WayneTech	TAB
Pause	ESC
Zoom	Z

***TIP:** You can also use an Xbox 360® Controller for Windows to play the game.*



PLAYING THE GAME PLAYING THE GAME

GAME SCREEN



1. XP: The green bar in the upper left corner shows Batman's current experience (XP) level. Batman can earn XP by defeating criminals, and when the green bar is filled he may purchase an upgrade from WayneTech.

2. HEALTH/ARMOUR: The gray bar underneath the XP gauge displays Batman's health. Upgrades can be purchased from the WayneTech menu that adds additional armour to the Batsuit, making it more resilient to gunfire or melee attacks.

3. COMPASS: At the top of the screen lies the compass. Waypoints appear on the compass, indicating which direction Batman must travel to find his objective.

4. GADGETS: Batman's arsenal of Gadgets is displayed in the lower left corner of the screen. More Gadgets unlock as Batman progresses through the story.

5. RETICLE: The targeting reticle appears whenever there is a nearby ledge for Batman to grapple to, or when he is manually aiming a Gadget.

PLAYING THE GAME PLAYING THE GAME

COMBAT



To survive in the mean streets of Arkham City, Batman needs to utilise all of his martial arts training and keen instincts to take down his foes. Press **left click** to strike.

Countering Attacks

When an enemy is about to attack Batman, a lightning bolt icon appears above their head. Before the icon disappears, press **right click** to counter the attack.

Stun

Click the **mouse wheel** to cape stun an enemy. In their confusion, Batman can land a beatdown attack, aerial attack, or make a quick getaway using the grapple gun. Some enemies must be stunned before they can be attacked.

Evade

Batman can leap over enemies or dive out of the way of attacks by pressing **SPACE+SPACE**.

Quickfire Gadgets

Some of Batman's gadgets can be fired off quickly during combat without having to manually aim. Please see the Gadgets section of the manual for more details on each item's function.

Quickfire Batarang	1+1
Quickfire Batclaw	2+2
Quickfire Explosive Gel	3+3
Quickfire REC	4+4
Quickfire Freeze Blast	5+5

Combos

String together strikes, counters, gadgets, stuns, and evade moves without taking or missing a hit to create a combo. Combos multiply the amount of XP Batman receives from a fight. The current multiplier is displayed under Batman's health bar. If Batman is attacked or takes too long to land the next hit, then the multiplier ends.



PLAYING THE GAME PLAYING THE GAME

DETECTIVE MODE

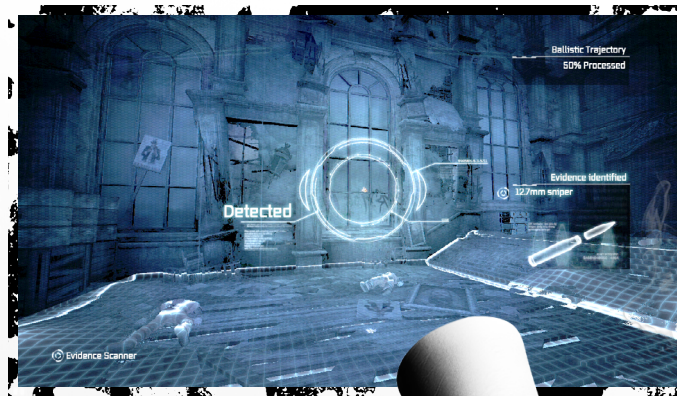


Press **X** to activate Detective Mode at any time. Detective Mode gives Batman an alternate view of his surroundings, enabling him to spot enemies, hiding spots, and structural weaknesses in his surrounding environment.

Hiding spots, such as gargoyles and grates, and other object of interest, like security cameras and doors, appear orange in colour. Enemies with weapons also appear orange, while unarmed enemies are coloured in blue. Structurally unsound walls that Batman can break through or destroy appear translucent, with an “explosion” icon superimposed over them.

While in Detective Mode, Batman also can get tactical information on enemies or objects, such as what weapons or equipment an enemy has or the specific function of a control panel, such as security systems or door locks.

TIP: Detective Mode can also be used to spot hidden clues left by the Riddler. Keep an eye out for his telltale question mark in the environment.



Scanning

By holding **X** in certain situations, Batman can scan the area for clues. Use this tool to analyse evidence, or mark out-of-reach Riddler trophy locations to find later on.



YOU ARE UNDER
CLOSE SURVEILLANCE

PLAYING THE GAME PLAYING THE GAME

INVISIBLE PREDATOR



Batman has trained for years to become an expert at hunting from the shadows and striking fear into the criminals of Gotham City. The techniques and tools he's developed over the years are put to the test in Arkham City.

TIP: All takedown moves are initiated by pressing **right click**.

Vantage Points

The gargoyles keeping watch over Arkham City make the perfect spot for Batman to avoid detection and survey enemies. Combined with Detective Mode, crouching on a vantage point is an excellent opportunity to strategically plan the best way to take out foes.



WARNING: Some enemies are equipped with thermal scanners that can detect Batman's presence on a vantage point.

Corner Cover/

Corner Cover Takedown

While hidden in Corner Cover, Batman can take out any approaching, unaware enemy when they move into close proximity. While crouching, press **SPACE** to take cover and press **right click** to initiate the takedown.



Silent Takedown

To knock out an enemy without his allies becoming aware, hold **LCTRL** to crouch and sneak up behind the target. Once in range, press **right click** to initiate the takedown.



Knockout Smash

During a Silent Takedown, Batman can instantly render an enemy unconscious by pressing **left click**. However, this move is noisy and will attract nearby enemies.

PLAYING THE GAME PLAYING THE GAME

Double Takedown

Move silently behind two unaware enemies and press **right click** to dish out a skull-cracking move that knocks them both out simultaneously.

Inverted Takedown

If Batman is perched atop a gargoye, and an enemy wanders underneath Batman, press **right click** to ambush them. Note that this move is not silent and will attract nearby enemies. Be prepared to move!



Grate Takedown

If an unaware enemy wanders by while Batman is hiding under a floor grate, press **right click** to leap out and knock them unconscious. This move is noisy, and will attract other enemies to investigate the grate.



Ledge Takedown

While hanging from a ledge, press **right click** to reach up and grab an enemy on the walkway above, pulling them over the edge and knocking them out. This takedown is noisy and will attract other enemies.

Hanging Ledge Takedown

If Batman is standing on a ledge or perched on a railing directly above an enemy, he can drop down and use his legs to silently choke the enemy unconscious.

Window/Wooden Wall Takedown

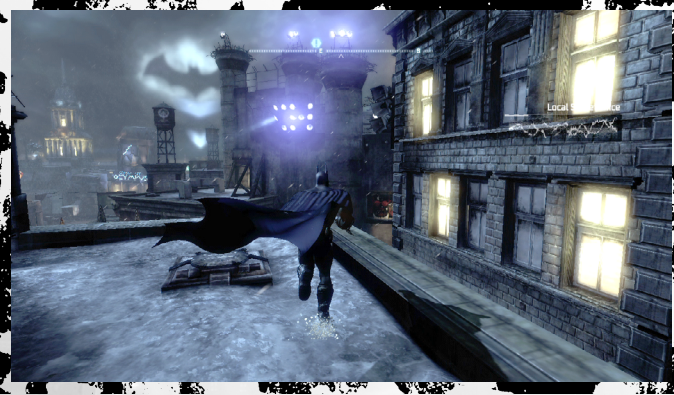
When Batman finds himself on the opposite side of a window or weakened wall from an enemy, he can smash through and instantly knock out his opponent. This move generates a lot of noise and will attract any nearby enemies.



TIP: Only the Silent Takedown, Corner Cover Takedown, and Hanging Ledge Takedown are silent attacks. Be prepared to move quickly when performing one of the other takedowns.

PLAYING THE GAME PLAYING THE GAME

NAVIGATION



Use **W/S/A/D** to move Batman through the environment. Holding **SPACE** while moving causes Batman to run. While running, Batman automatically jumps and climbs over obstacles.

Glide

Batman's cape is specifically designed to allow gliding through the air for long distances. When in the air hold **SPACE** to deploy Batman's cape and use the mouse to guide his descent.



Dive Boost

Hold **LCTRL** while gliding to make Batman dive straight down and then pull up to gain a boost in speed and height. Use this increase in speed to glide longer distances, or catch unsuspecting enemies with a brutal tackle.



Grapnel Gun

Batman's grapnel gun is an essential tool in his navigational skills. Simply tap **F** and Batman will instantly grapple and climb to the nearest ledge. Press **LCTRL** at any time during a grapple to disengage the hook. The grapnel gun can be upgraded to boost the speed of the grapnel line, launching Batman high in the air. Combined with Dive Boosts and Glide, Batman can cover huge distances without touching the ground.



Slide

While running, press **LCTRL** and Batman will perform a slide kick. Sliding can be used to navigate under small gaps, instantly remove vent covers, or initiate combat.



PLAYING THE GAME PLAYING THE GAME

Drop Attack

When Batman is above an enemy, Batman can perform a Drop Attack if a bat symbol appears above their head. Press **left click** when the symbol appears to drop down on the enemy.



Glide Kick

While gliding or perched on a high vantage point, Batman can initiate a Glide Kick on any enemy in range. When the bat symbol appears above an enemy's head, press **left click** and Batman will automatically glide down and attack.



GADGETS



Batman is also well-known for his arsenal of crime-fighting technology. Properly utilising Batman's gadgets is crucial for survival in Arkham City. The Dark Knight starts out with a small number of gadgets, but can acquire more by defeating certain enemies, completing side missions, or purchasing upgrades through WayneTech. Gadgets are selected with the **number keys**, or by scrolling the **mouse wheel**.

Batarang

Batman's signature weapon can be used to stun foes or hit objects that are out of reach. Hold **right click** to aim, and press **left click** to throw the Batarang. Alternatively, tap **1+1** quickly to fire a Batarang. Up to three Batarangs can be thrown in rapid succession.

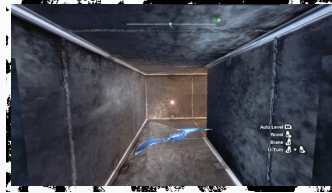


PLAYING THE GAME

PLAYING THE GAME

Remote Controlled Batarang

The Remote Control Batarang is useful for hitting switches and objects that are out of reach. Batman can control the speed and direction of this Batarang as it flies through the air. This gadget can be upgraded to fire a pre-programmed Batarang that will loop back on itself and hit an enemy from behind.



Auto Level

Brake

Boost

U-Turn

mouse wheel (click)

right click

left click

left click + right click

Batclaw

The Batclaw is used primarily to interact with out of reach objects and pull them towards Batman. Hold **right click** to aim, and press **left click** to fire the Batclaw.

The Batclaw can be upgraded to disarm gun-wielding enemies.



Explosive Gel

Batman's Explosive Gel is used to temporarily incapacitate enemies or explode through structural weaknesses. Hold **right click** to aim, and press **left click** to place a charge of Explosive Gel. To detonate the gel, hold **right click** and click the **mouse wheel**. Up to three charges may be placed before detonation.



Cryptographic Sequencer

The Cryptographic Sequencer comes in handy when Batman needs to decrypt a secure radio frequency, hack into a security console, or break an electronic door lock. Hold **right click** to aim, press **left click** to deploy the tool, and then use **A/D** with **left click/right click** to interact with the device.

Smoke Pellet

Smoke Pellets flood the area with a disorientating smoke. The smoke can be used defensively, allowing Batman to escape while under fire, or offensively to create confusion among enemies. Hold **right click** to aim, and press **left click** to throw a Smoke Pellet, or click the **mouse wheel** to drop a pellet at Batman's feet.



REC (Remote Electrical Charge)

The REC provides electricity to unpowered generators and electromagnets, opening up new areas for Batman or creating a diversion. It can also be used to administer a non-lethal shock to enemies. Hold **right click** to aim, and press **left click** to fire a positive charge, or click the **mouse wheel** to fire a negative charge.



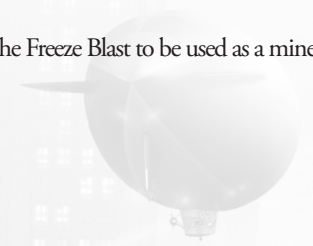
Line Launcher

The Line Launcher is a navigational tool that allows Batman to quickly move across a horizontal area. Hold **right click** to aim, press **left click** to fire a line, and then Batman automatically zips across the line. Holding **right click** while zipping across the line allows Batman to fire another line and change directions.

This gadget can be upgraded to allow Batman to flip onto the line and use it as a tightrope. Once upgraded, click the **mouse wheel** while zipping to walk on the line.

These grenades, based on Mr. Freeze's technology, allow Batman to temporarily hold enemies in place or freeze water at any temperature. Hold **right click** to aim, and press **left click** to throw a grenade.

This gadget may be upgraded, allowing the Freeze Blast to be used as a mine by clicking the **mouse wheel**.



Freeze Cluster Grenade

This advanced Freeze weapon creates a large blast radius capable of freezing multiple enemies to the ground at once. Trapped enemies are free to move their torso and attack, so beware when freezing enemies with firearms. Hold **right click** to aim, and press **left click** to throw the cluster grenade.

Disruptor

The Disruptor is used to remotely detonate mines or shut down freeze-based weapons. Hold **right click** to aim, and hold **left click** to disable the targeted device. It may be used up to two times before a recharge period is required.

This gadget can be upgraded to disable standard firearms.

BATCOMPUTER



- Press **TAB** at any time to access the Batcomputer. From here Batman can set waypoints, review character dossiers, or access WayneTech to purchase new gadget upgrades and skills. Press **A/D** to switch between the three main Batcomputer functions.



Map/Objectives

Through sophisticated satellite technology, Batman has access to the full layout of Arkham City. Batman is able to see waypoints for his current objectives or side missions, and set custom waypoints to assist navigation to any point on the map.

Highlight an area on the map and press **BACKSPACE** to set a custom waypoint. A white marker appears on Batman's compass to guide the way, and the Bat-Signal appears in the Arkham City sky above the custom waypoint location.

Batcomputer Data

Here Batman can access data files on important people or stories he runs across in Arkham City.



WayneTech

With the WayneTech interface, Batman can use the XP earned in combat to purchase new skills or gadget upgrades. Each full bar of XP earned allows Batman to purchase one item from WayneTech.



Riddles

The Riddler has set up puzzles and trophies all over Arkham City, with the intent of testing Batman's wits to find them all. This section of the Batcomputer is used to track the trophies and puzzles in each district of Arkham City. Solve the Riddler's puzzles to unlock bonus content such as challenge rooms and concept art.



TIP: Certain criminals in Arkham City are working covertly for the Riddler, and appear with a green highlight. Knock out all of the thugs but the highlighted one and interrogate him to gain more information about the Riddler's master scheme.

CATWOMAN

After completing Catwoman's story in the main game, keep an eye on the rooftops of Arkham City for groups of cats lounging together to switch characters. These areas are also marked on the Batcomputer map with a pink Catwoman marker. Approach these friendly felines and press **SPACE** to switch control to Catwoman.

Move	W/S/A/D
Look around	mouse
Run/Evade	SPACE (hold)/SPACE+SPACE
Strike/Use Gadget	left click
Whip Stun	mouse wheel (click)/Q
Counter	right click
Thief Vision	X
Climb	F
Aim Gadget (hold)	right click
Crouch	LCTRL
Select Gadget	mouse wheel (scroll)/number keys
WayneTech	TAB
Pause	ESC
Zoom	Z



MAIN MENU

New Story/Continue Story

Begin a new *Batman: Arkham City* game from the beginning, or continue a story from the last saved checkpoint.

TIP: *Batman: Arkham City automatically saves your progress at certain checkpoints. When the autosave icon appears on your screen, do not turn off the system or eject the disc.*

Statistics

View various gameplay statistics and track your overall progress through the game.

Riddler's Revenge

Take on several challenges set up by the Riddler to push Batman to his limits. Additional challenges can be unlocked by finding Riddler Trophies scattered throughout Arkham City.

RANKED CHALLENGES: Take on the Riddler's challenges with no set modifiers. Compare your skills against your friends, and the world, using the online leaderboards.

CUSTOM CHALLENGES: Select a map, and then add multiple modifiers to create a unique challenge.

CAMPAIGNS: Fight your way through a gauntlet of challenges, while tactically choosing which modifiers to use on each map. The only requirement is that you must have used every modifier by the end of the campaign.

MAIN MENU

Story Synopsis

Review your story progress on the game save currently in progress.

Character Trophies

View 3D character models unlocked by finding Riddler Trophies in the main game.

Options

Adjust game settings and view controls. Please see the Options section of the manual for more details.

New Game Plus

Start a new game with all of the gadgets and upgrades earned in your first playthrough of *Batman: Arkham City*. Enemies appear in different configurations and the overall difficulty is increased. You must complete the main story at least once on Normal or Hard difficulty to unlock this option.

Concept Art

View environment and character concept art. These can be unlocked by finding Riddler Trophies hidden in the main game.

Credits

View the *Batman: Arkham City* credits.

OPTIONS

GAME OPTIONS

INVERT LOOK: Select to invert the controls while moving the camera up and down.

INVERT ROTATION: Select to invert the controls while rotating the camera.

INVERT FLIGHT CONTROLS: Invert the controls while Batman is gliding.

INVERT BATARANG FLIGHT CONTROLS: Invert the controls when steering the Remote Controlled Batarang.

CAMERA ASSIST: Select if you would like to use the Camera Assist feature.

HINTS: Turn in-game hints on or off.

VIBRATION: Toggle controller vibration on or off.

BRIGHTNESS: Adjust the brightness of the game.

AUDIO OPTIONS

SUBTITLES: Select if you would like to display in-game subtitles.

SFX VOLUME: Adjust the volume for sound effects.

MUSIC VOLUME: Set the volume for the music of *Batman: Arkham City*.

DIALOGUE VOLUME: Adjust the volume for all dialogue in the game.

CONTROLS

View the general gameplay controls for *Batman: Arkham City*.



PAUSE MENU



Press **ESC** at any time during gameplay to enter the pause menu.

Resume

Return to the game currently in progress.

Game Options

Adjust gameplay and brightness settings.

Audio Options

Adjust volume and subtitle settings.

Resume

Return to the game currently in progress.

Controls

Review the basic gameplay controls.

Restart

Resume the game from the last saved checkpoint.

Exit

Quit the game and return to the main menu. Any unsaved progress will be lost.

END USER LICENSE AGREEMENT

This end user license agreement ("Agreement") is a legal agreement between you and WB Games Inc., a company duly organized under the laws of the State of Washington, with its principal offices at 12131 113th Avenue NE, Suite 300, Kirkland, WA, USA ("WB Games") for the interactive entertainment product, including the software included herewith, the associated media and any printed materials (collectively, the "Product"). By installing, accessing, playing or otherwise using the Product, you agree to be bound by the terms of this Agreement. If you do not agree to the terms of the Agreement, do not install, access, play or otherwise use the Product.

SOFTWARE LICENSE: WB Games grants to you the non-exclusive, non-transferable, revocable, limited right and license to use one copy of this Product solely and exclusively for your personal use. All rights not specifically granted under this Agreement are reserved by WB Games. This Product is licensed, not sold. Your license confers no title or ownership in this Product and should not be construed as a sale of any rights to the Product. The Product contains font software licensed from third parties. Such font software shall only be used with the Product and not extracted from the Product for any purpose. All right, title and interest in and to this Product and any and all copies thereof (including, but not limited to any and all titles, computer code, technology, themes, objects, characters, character names, stories, dialog, catch phrases, locations, concepts, artwork, music, etc.) are owned by WB Games or its licensors. This Product is protected by the copyright laws of the United States, international copyright treaties and conventions and other laws. This Product contains certain licensed materials and WB Games' licensors may protect their rights in the event of any violation of this Agreement.

You may not: (1) copy the Product in its entirety onto a hard drive or other storage device; (2) distribute, rent, lease or sublicense all or any portion of the Product; (3) modify or prepare derivative works of the Product; (4) transmit the Product over a network, by telephone or electronically using any means, or permit the use of the Product in a network, multi-user arrangement or remote access arrangement, except in the course of your network multiplayer play of the Product over authorized networks; (5) design or distribute unauthorized levels; (6) reverse engineer the Product, derive source code, or otherwise attempt to reconstruct or discover any underlying source code, ideas, algorithms, file formats, programming or interoperability interfaces of the Product by any means whatsoever, except to the extent expressly permitted by law despite a contractual provision to the contrary, and then only after you have notified WB Games in writing of your intended activities; (7) export or re-export the Product or any copy or adaptation thereof in violation of any applicable laws without first obtaining a separate license from WB Games (which WB Games may or may not grant in its sole discretion) and WB Games may charge a fee for any such separate licenses.

Because WB Games would be irreparably damaged if the terms of this Agreement were not specifically enforced, you agree that WB Games shall be entitled, without bond, other security or proof of damages, to appropriate equitable remedies with respect to breaches of this Agreement in addition to such other remedies as WB Games may otherwise have under applicable laws. In the event any litigation is brought by either party in connection with this Agreement, the prevailing party in such litigation shall be entitled to recover from the other party all the costs, attorneys' fees and other expenses incurred by such prevailing party in the litigation.

CUSTOMER SUPPORT: In the unlikely event of a problem with your Product, you may only need simple instructions to correct the problem. Please contact WB Games Customer Service Department by emailing us at WBGames.IntSupport@warnerbros.com or on the web at www.BatmanArkhamCity.com/support before returning the Product to a retailer. Please do not send any Product to WB Games without contacting us first.

LIMITED WARRANTY: WB Games warrants to the best of WB Games' ability to the original consumer purchaser of the Product that the medium on which the Product is recorded shall be free from defects in materials and workmanship for a period of one hundred eighty (180) days from the original date of purchase. If a defect in the materials or workmanship occurs during this one hundred eighty (180) day warranty period, WB Games will either repair or replace, at WB Games' option, the Product free of charge. In the event that the Product is no longer available, WB Games may, in its sole discretion, replace the Product with a product of comparable value. The original purchaser is entitled to this warranty only if the date of purchase is registered at point of sale or the consumer can demonstrate (to WB Games' satisfaction) that the Product was purchased within the last one hundred eighty (180) days.

To receive warranty service:

Notify the WB Games Customer Service Department of the problem requiring warranty service by emailing WBGames.IntSupport@warnerbros.com. If the WB Games service technician is unable to solve the problem by phone or on the web via email, he/she may authorize you to return the Product, at your risk of damage, freight and insurance prepaid by you, together with your dated sales slip or similar proof of purchase within the one hundred eighty (180) day warranty period to:

ede Business Solutions Europe Ltd, Warner Bros. Tech Support, 9th Floor Skypark 1, 8 Elliot Place, Glasgow G3 8EP, Scotland

WB Games is not responsible for unauthorized returns of Product and reserves the right to send such unauthorized returns back to customer. This limited warranty shall not be applicable and shall be void if: (a) the defect in the Product has arisen through abuse, unreasonable use, mistreatment or neglect; (b) the Product is used with products not sold or licensed by the manufacturer or WB Games (including but not limited to, non-licensed game enhancements and copier devices, adapters and power supplies); (c) the Product is used for commercial purposes (including rental); (d) the Product is modified or tampered with; or (e) the Product's serial number has been altered, defaced or removed.

WARRANTY LIMITATIONS / DISCLAIMER: EXCEPT AS EXPRESSLY PROVIDED HEREIN AND TO THE EXTENT PERMITTED BY APPLICABLE LAW, THE PRODUCT IS MADE AVAILABLE TO YOU UNDER THIS AGREEMENT ON AN "AS IS" BASIS WITH NO WARRANTY OF ANY KIND. TO THE EXTENT PERMITTED BY APPLICABLE LAW, THE EXPRESS LIMITED WARRANTY SET FORTH ABOVE IS IN LIEU OF ALL OTHER WARRANTIES AND REPRESENTATIONS, EXCEPT AS PROVIDED IN THE LIMITED WARRANTY ABOVE. ALL OTHER EXPRESS OR IMPLIED WARRANTIES, CONDITIONS OR OTHER TERMS APPLICABLE TO THIS PRODUCT, INCLUDING, WITHOUT LIMITATION, IMPLIED WARRANTIES, CONDITIONS OR OTHER TERMS OF CONDITION, UNINTERRUPTED USE, MERCHANTABILITY, FITNESS FOR A PARTICULAR PURPOSE AND NON-INFRINGEMENT ARE HEREBY DISCLAIMED BY WB GAMES. SOME OF THE EXCLUDED CATEGORIES OF CERTAIN IMPLIED WARRANTIES, CONDITIONS OR OTHER TERMS, SO THE ABOVE EXCLUSION MAY NOT APPLY TO YOU. THIS WARRANTY GIVES YOU SPECIFIC LEGAL RIGHTS AND YOU MAY ALSO HAVE OTHER LEGAL RIGHTS THAT VARY FROM COUNTRY TO COUNTRY. IF ANY SUCH WARRANTIES ARE INCAPABLE OF EXCLUSION, THEN SUCH WARRANTIES APPLICABLE TO THIS PRODUCT SHALL BE LIMITED TO THE 180 DAY PERIOD DESCRIBED ABOVE.

LIMITATION OF LIABILITY: TO THE EXTENT PERMITTED BY APPLICABLE LAW, IN NO EVENT SHALL WB GAMES BE LIABLE FOR ANY OF THE FOLLOWING DAMAGES: (1) DIRECT; (2) SPECIAL; (3) CONSEQUENTIAL; (4) PUNITIVE; (5) INCIDENTAL; (6) DAMAGES TO PROPERTY; (7) LOSS OF GOODWILL; (8) COMPUTER FAILURE OR MALFUNCTION; AND (9) DAMAGES FOR PERSONAL INJURIES (EXCEPT WHERE SUCH INJURIES ARE CAUSED BY THE NEGLIGENCE OF WB GAMES), RESULTING FROM THE POSSESSION, USE OR MALFUNCTION OF THIS PRODUCT, EVEN IF WB GAMES HAS BEEN ADVISED OF THE POSSIBILITY OF SUCH DAMAGES. WB GAMES' LIABILITY SHALL NOT EXCEED THE ACTUAL PRICE PAID FOR THE LICENSE OF THIS PRODUCT. SOME COUNTRIES DO NOT ALLOW THE LIMITATION OR EXCLUSION OF CERTAIN CATEGORIES OF DAMAGES, SO THE ABOVE LIMITATION OR EXCLUSION MAY NOT APPLY TO YOU AND YOU MAY ALSO HAVE OTHER LEGAL RIGHTS THAT VARY FROM COUNTRY TO COUNTRY. IN SUCH INSTANCES WB GAMES' LIABILITY SHALL BE LIMITED TO THE FULLEST EXTENT PERMITTED BY THE APPLICABLE LAW. NOTHING IN THIS AGREEMENT SHALL BE CONSTRUED AS LIMITING OR EXCLUDING LIABILITY OF WB GAMES WHERE SUCH LIABILITY CANNOT BE LIMITED OR EXCLUDED UNDER APPLICABLE LAW.

CONSUMER END USERS ONLY: The limitations or exclusions of warranties and liability contained in this Agreement do not affect or prejudice the statutory rights of a consumer, i.e., a person acquiring goods otherwise than in the course of a business. The limitations or exclusions of warranties, remedies or liability contained in this Agreement shall apply to you only to the extent such limitations or exclusions are permitted under the laws of the jurisdiction where you are located.

GENERAL: The terms set forth in this Agreement, including the Warranty Limitations/Disclaimer and Limitation of Liability, are fundamental elements of the basis of the agreement between WB Games and you. WB Games would not be able to provide the Product on an economic basis without such limitations. Such Warranty Limitations/Disclaimer and Limitation of Liability inure to the benefit of WB Games' licensors, successors and assigns. This Agreement represents the complete agreement concerning this license between the parties and supersedes all prior agreement and representations between them with respect to the subject matter herein. This Agreement may be amended only by a writing executed by both parties. If any provision of this Agreement is held to be illegal, invalid or unenforceable for any reason, such provision shall, to the extent required, be deemed not to form part of this Agreement and the remaining provisions of this Agreement shall not be affected. If a provision is held to be illegal invalid or unenforceable to the extent permitted by the applicable law, such provision shall be reformed only to the extent necessary to make it enforceable. The controlling language of this Agreement is English. If you have received a translation into another language, it has been provided for your convenience only. This Agreement shall be construed under California law as such law is applied to agreements between California residents entered into and to be performed within California, except as governed by federal law, and you consent to the exclusive jurisdiction of the state and federal courts located in Los Angeles, California. Notwithstanding the foregoing, WB Games shall have the right to bring a claim against a Consumer End User in the courts of the jurisdiction in which such Consumer End User is domiciled.

BATMAN: ARKHAM CITY software © Warner Bros. Entertainment Inc. Developed by Rocksteady Studios. Unreal® Engine, copyright 1998-2011 Epic Games, Inc. Unreal, Unreal Technology and the Powered by Unreal Technology logo are trademarks or registered trademarks of Epic Games, Inc. Uses Scaleform GFX © 2011 Scaleform Corporation. Triviz™ for Games SDK is developed by Darkworks®, Triviz™ for Games SDK uses Triviz™ 3D process, Triviz™ is a trademark of Triviz SAS. Darkworks® is a registered trademark of Darkworks SA. All other trademarks and copyrights are the property of their respective owners. KINECT, Xbox, Xbox 360, Xbox LIVE, and the Xbox logos are trademarks of the Microsoft group of companies and are used under license from Microsoft.

DC LOGO, BATMAN and all characters, their distinctive likenesses, and related elements are trademarks of DC Comics © 2011. All Rights Reserved.

WB LOGO, WB GAMES LOGO, WB SHIELD.™ & © Warner Bros. Entertainment Inc.

(s11)



Scaleform

YOU ARE UNDER CLOSE SURVEILLANCE
36



rocksteady™

Windows, the Windows Start button, Xbox, Xbox 360, Xbox LIVE, and the Xbox logos are trademarks of the Microsoft group of companies, and "Games for Windows" and the Windows Start button logo are used under license from Microsoft.

5000128753